

FOR SALE

5.8 Acres

Noble Park Drive, Brecksville, Ohio

Available Land Specifications

Available: 5.8 Acres

Zoning: Manufacturing & Distribution

Access: I-77, I-271 or I-80. Noble Park Drive is located off of West Snowville Road, directly west of Southpointe Parkway



flexible spaces
all the right places.

Mark Ray, Vice President
216-351-7976, ext. 244
markray@fogg.com

fogg.com

RAY FOGG CORPORATE PROPERTIES, LLC – 981 Keynote Circle, Suite 15 – Cleveland, Ohio 44131
The information contained herein is from sources deemed reliable, but no warranty or representation is made to the accuracy hereof.

MINOR SUBD. OF 604-25-3 V224 P.145 5-15-79
SNOWVILLE SERVICE ASSOC. SUBD. V.293 P.44 8-26-98
LOT SPLIT V. 302 P. 89 11-18-99
LOT SPLIT V. 304 P. 71 2-25-00

25

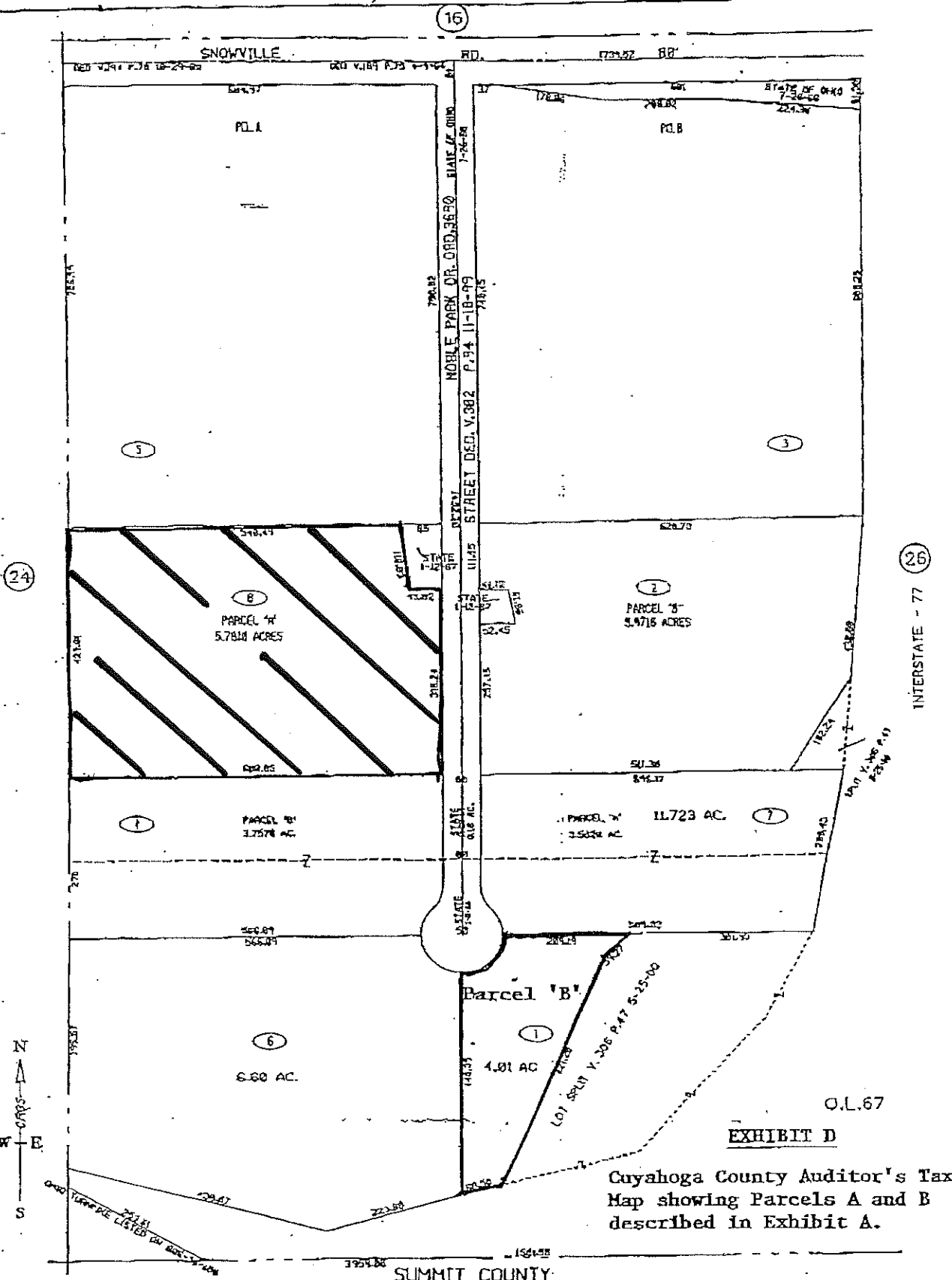


EXHIBIT D
Cuyahoga County Auditor's Tax Map showing Parcels A and B described in Exhibit A.

BRECKSVILLE MAP 604

SCALE: 1"=100'