

flexible spaces all the right places...



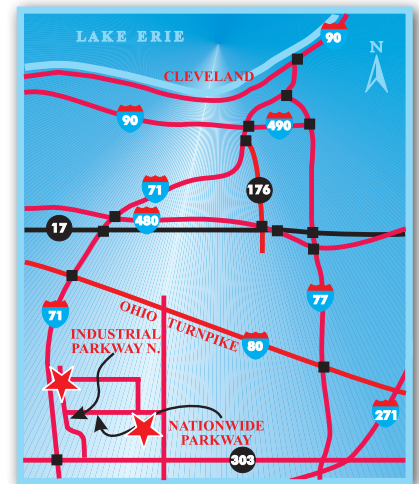
...Brunswick Business Centre I & II
2774 & 2792 Nationwide Parkway



...Brunswick Business Centre III & IV
1126 & 1130 Industrial Parkway

“Flexible Spaces in All the Right Places” is what Fogg had in mind when designing their large portfolio of office, industrial and office/warehouse (flex) properties. Strategically located near major freeways in northeast Ohio, Fogg’s properties offer flexible floor plans, truck access and lease terms, as well as expansion opportunities for their growing customers.

Well located near the intersection of I-71 and State Rt. 303 in Brunswick, Ohio, Fogg’s properties are within the thriving Brunswick Industrial Park. The park is located within minutes of the Ohio Turnpike I-80, I-71 and Cleveland Hopkins International Airport. These office/warehouse buildings are designed to be easily altered to fit a variety of distribution and light manufacturing uses.



“I have worked with various property managers finding corporate expansion facilities for the last twenty-five years in five different States and by far Ray Fogg Corporate Properties management services has the smoothest operations and the nicest people to work with.”

- **E & R Industrial**

“We have been pleased with the responsiveness of the entire Fogg organization. They are professional and a straightforward business partner.” - **Virginia Tile Company**



216.351.7976
fogg.com

STANDARD BUILDING SPECIFICATIONS

Brunswick Business Centre I, II, III & IV

The following information is a general description of the project. Please see the Individual Space Specifications for more details on each available space.



LOCATION & ACCESS

Shared Features

- Located in the Brunswick Industrial Park at the four way interchange of I-71 and Rt. 303
- Easy access to I-71, Ohio Turnpike I-80, I-271 and West 130th St.

Brunswick Business Centre I & II

- 6.23 acre site fronting onto West 130th St. & Nationwide Parkway in Brunswick, Ohio

Brunswick Business Centre III & IV

- 6.18 acre site fronting onto Industrial Parkway North and I-71 in Brunswick, Ohio

PROPERTY DATA

- Brunswick Business Centre I: 39,360 SF
- Brunswick Business Centre II: 49,700 SF
- Brunswick Business Centre III: 40,213 SF
- Brunswick Business Centre IV: 40,213 SF

EAVE HEIGHT

- 20'

COLUMN SPACING

- Brunswick Business Centre I: 25' x 40'
- Brunswick Business Centre II: 25' x 50'
- Brunswick Business Centre III & IV: 25' x 40'

TRUCK ACCESS/DOORS

- Truck docks with insulated metal industrial doors
- Drive-Ins with insulated metal industrial doors
- Personnel: 20 gauge plush hollow metal doors

ROOF

- 2" standing seam, 24 gauge aluminized steel, single-sloped with 4" vinyl faced insulation (U = .08; R = 13)

FLOOR

- 5" reinforced concrete

WAREHOUSE LIGHTING

- Fluorescent fixtures (25 F.C.)

SPRINKLER SYSTEM

- Wet / Ordinary hazard

EXTERIOR WALLS

Brunswick Business Centre I & II

- 3" interlocking metal panels with 3" insulation (U = .10; R = 10) and a pebble-grained, fluoropolymer finish
- Dryvit wall systems

Brunswick Business Centre III & IV

- 3" interlocking metal facade panels with pebble-grained, fluoropolymer finish and 3" insulation (U=10; R=10)
- Prepainted aluminum clad Weyerhaeuser Panel 15

HVAC

- Warehouse: gas-fired unit heater, (Heating: 60°F temperature difference at 0°F outside)
- Office: gas-fired furnace with electric air conditioner, (Heating: 68°F temperature difference at 0°F outside; Air Conditioning: 15°F temperature difference at 90°F outside)

OFFICE AREAS

- Partitions: 5/8" drywall on 3-5/8" metal studs
- Ceiling: 2' x 4' acoustical tile on suspended T-grid System
- Floor: commercial grade carpeting or vinyl tile (V.C.T.)
- Entrance Doors: glass with aluminum tubular frames
- Interior Doors: 1-3/8" flush birch doors with hardware
- Windows: insulated glass with aluminum tubular frames
- Paint: two coats of Latex on drywall; enamel on door frames
- Plumbing: surface mounted water closet and lavatory

PARKING & DRIVES

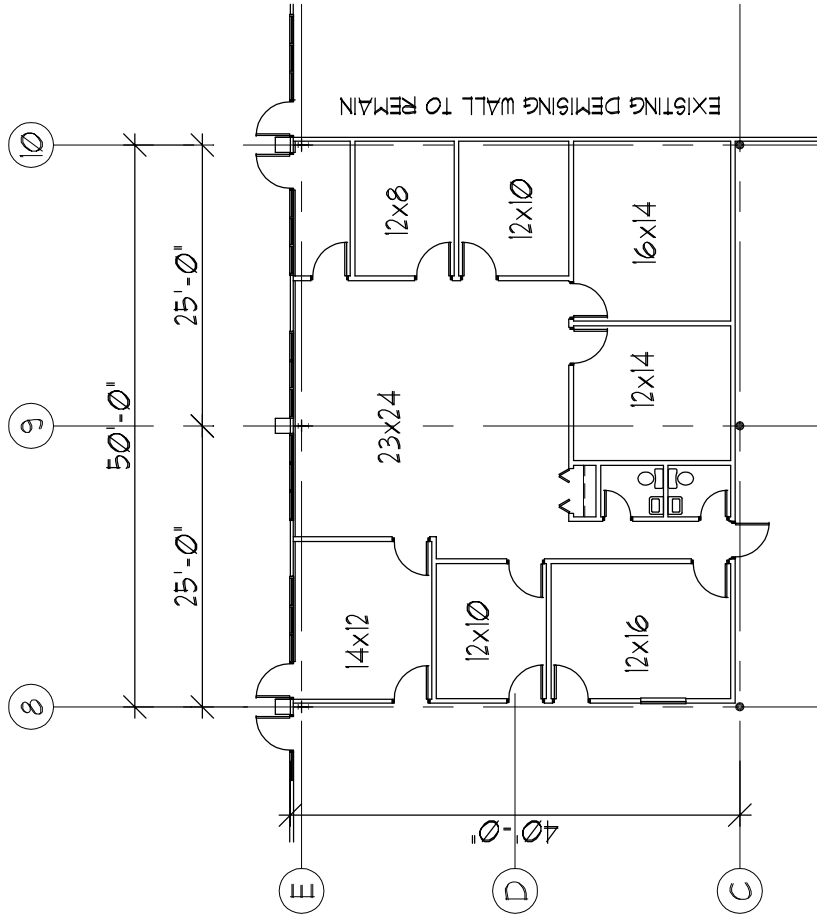
- Automobile Parking: 4" concrete
- Truck Drives / Ramps: 7" concrete in truck drives and docks

UTILITIES

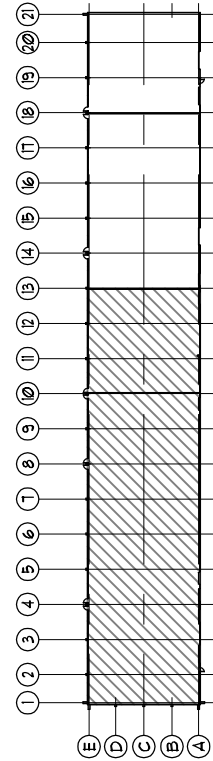
- Electric: Ohio Edison
- Gas: Columbia Gas of Ohio
- Telephone: Verizon
- Water: City of Cleveland (main - 12")
- Sanitary Sewer: City of Brunswick (main - 10")
- Storm Sewer: Medina County



216.351.7976
fogg.com



OFFICE FLOOR PLAN



OFFICE AREA = 2,188.44 SF
 WAREHOUSE AREA = 2,151.823 SF
 TOTAL AREA = 23,706.67 SF

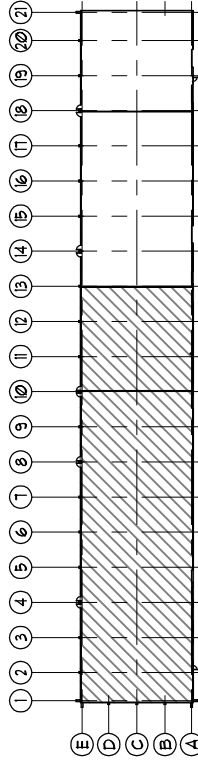
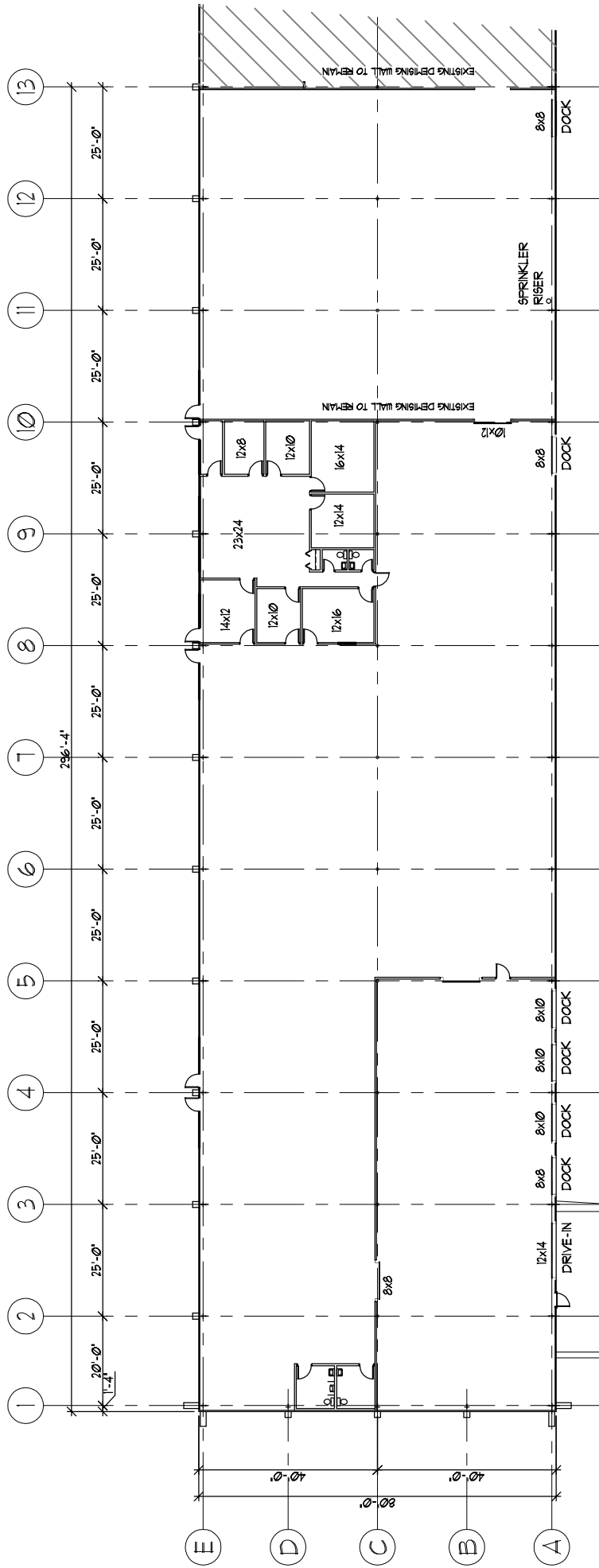
BRUNSWICK BUSINESS CENTRE I
 27th NATIONWIDE PARKWAY
 BRUNSWICK, OHIO

DATE	BY	CHK	APP	SCALE
12/15/16	JFK			A-2

KEY PLAN
 BAYS 1-13

(216) 351-1916
 1-877-129-3644


RAY FOGG CORPORATE PROPERTIES, LLC
 981 KEYNOTE CIRCLE, SUITE 15
 BROOKLYN HEIGHTS, OHIO 44131



FLOOR PLAN

OFFICE AREA = 2,188.44 SF
 WAREHOUSE AREA = 2,151.823 SF
 TOTAL AREA = 23,706.67 SF

BRINSWICK BUSINESS CENTRE I
 2714 NATIONAL PARKWAY
 BRINSWICK, OHIO



RAY FOGG BUILDING METHODS, INC.
 88 KENTWOOD, SUITE 400
 PORTLAND, OHIO 44131

DATE	BY	CHK	APP	SCALE
12/15/11	JFK	JFK	JFK	A-1

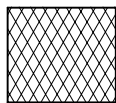
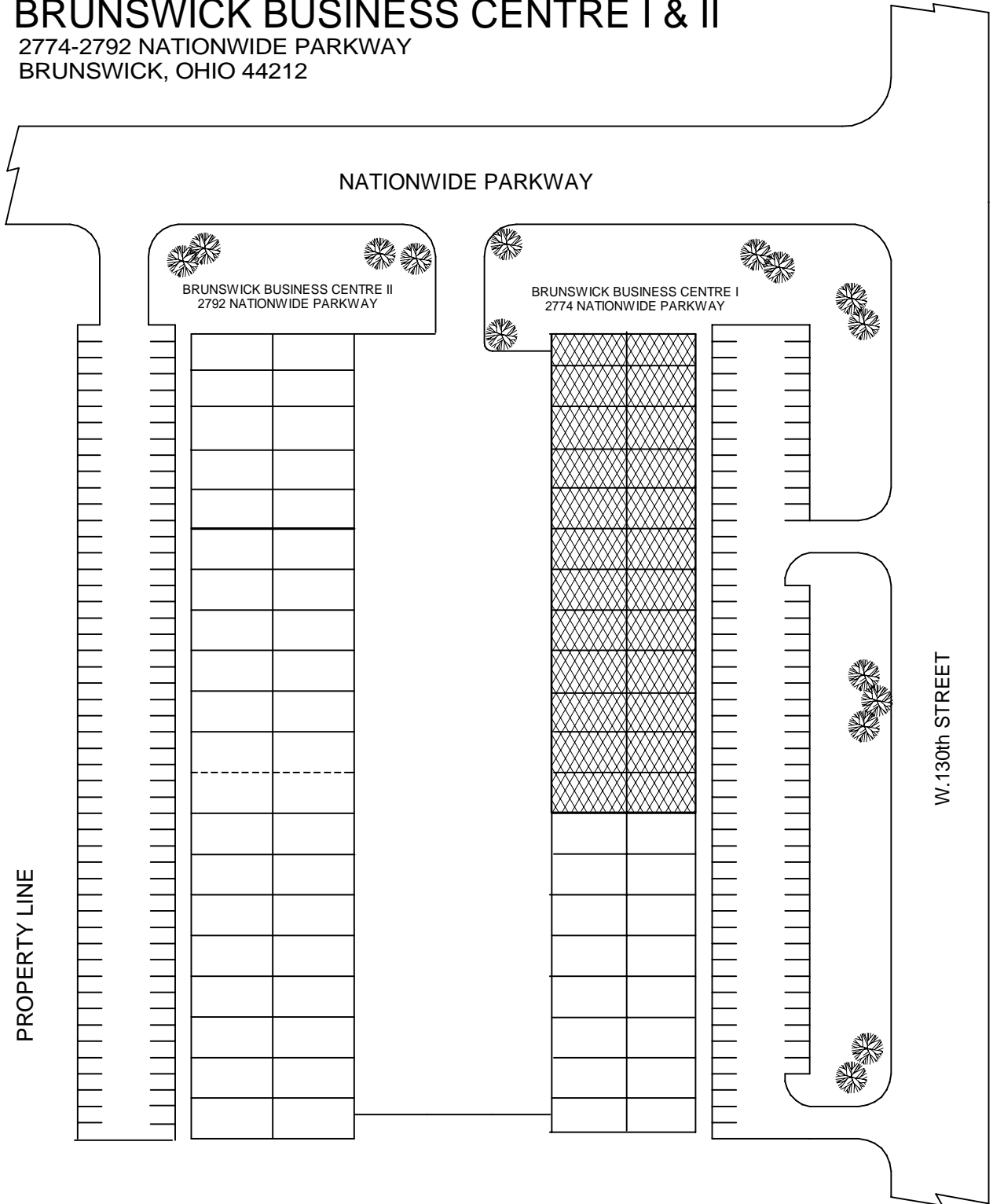
KEY PLAN
 BAYS 1-13

(216) 351-1916
 1-877-129-3644

RAY FOGG CORPORATE PROPERTIES, LLC
 981 KEYNOTE CIRCLE, SUITE 15
 BROOKLYN HEIGHTS, OHIO 44131

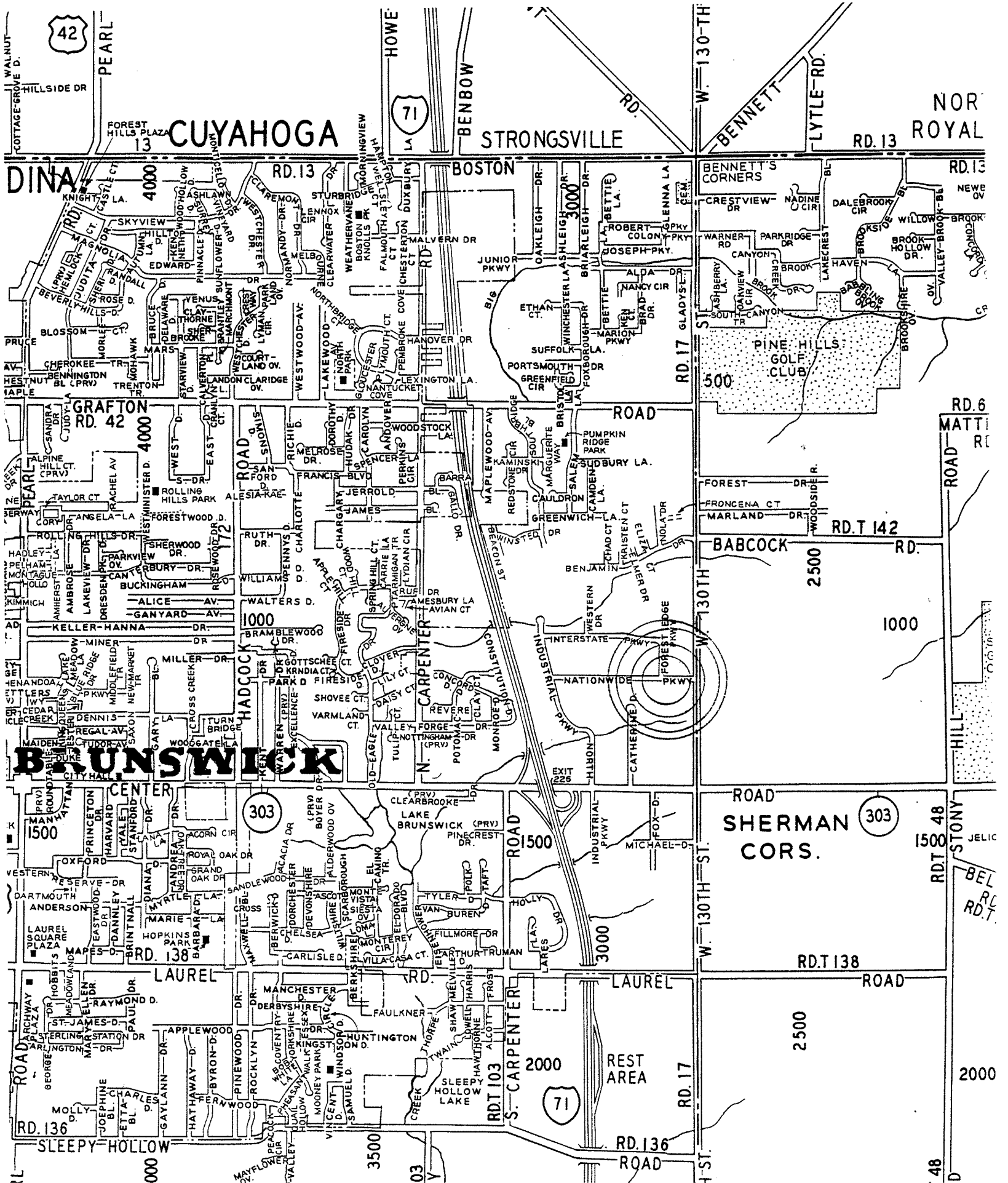
BRUNSWICK BUSINESS CENTRE I & II

2774-2792 NATIONWIDE PARKWAY
BRUNSWICK, OHIO 44212



23,707 SF

021706	BRUN12-D



42
PEARL

CUYAHOGA

STRONGSVILLE

NOR ROYAL

DINAWOOD

BOSTON

BENNETT'S CORNERS

GRAFTON

ROAD

RD. 6 MATTI

BRUNSWICK

303

SHERMAN CORNERS

303

LAUREL

LAUREL

2500

2000

71

RD. 136

48