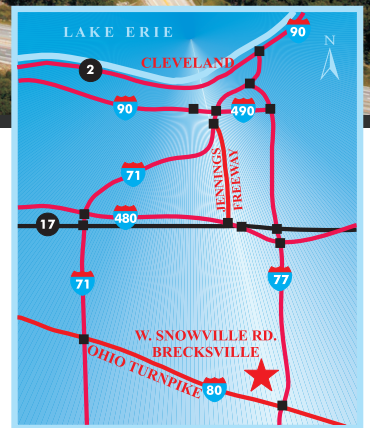


Snowville Business Park



Snowville Business Park

Located off of Interstate 77 just north of the Ohio Turnpike in the upscale community of Brecksville, Ohio, Fogg offers ready to build sites ranging from 5 to 17 acres of land suitable for light industrial development. This freeway visible site is perfect for a corporate headquarters building, light industrial or a research & development facility. Located between Cleveland and Akron, the site is easily accessible from I-77, State Route 21 and the Ohio Turnpike (I-80). All utilities are available at the street.

“We have been a partner with Ray Fogg Corporate Properties since 2021. I say partner, and not tenant, as we both take pride and responsibility in our facility. The building is well constructed and meets all of our distribution needs. The team at Fogg is quick to respond to any issue, no matter how small, and I will tell you they have all been small. I foresee our corporation remaining with team Fogg for years to come.” -Veritiv Corporation



STANDARD SPECIFICATIONS

Snowville Business Park

The following information is a general description of the project.



flexible spaces
all the right places.

Features include:

LOCATION & ACCESS

- Just west of I-77 and north of I-80 on W. Snowville Rd.
- Easy Access to I-77, Ohio Turnpike (I-80), and I-271
- Located in the City of Brecksville
- High image community
- Midway between Cleveland and Akron
- Visible from Ohio Turnpike (I-80)

ZONING

- MD, Manufacturing-Distribution

PROPERTY DATA

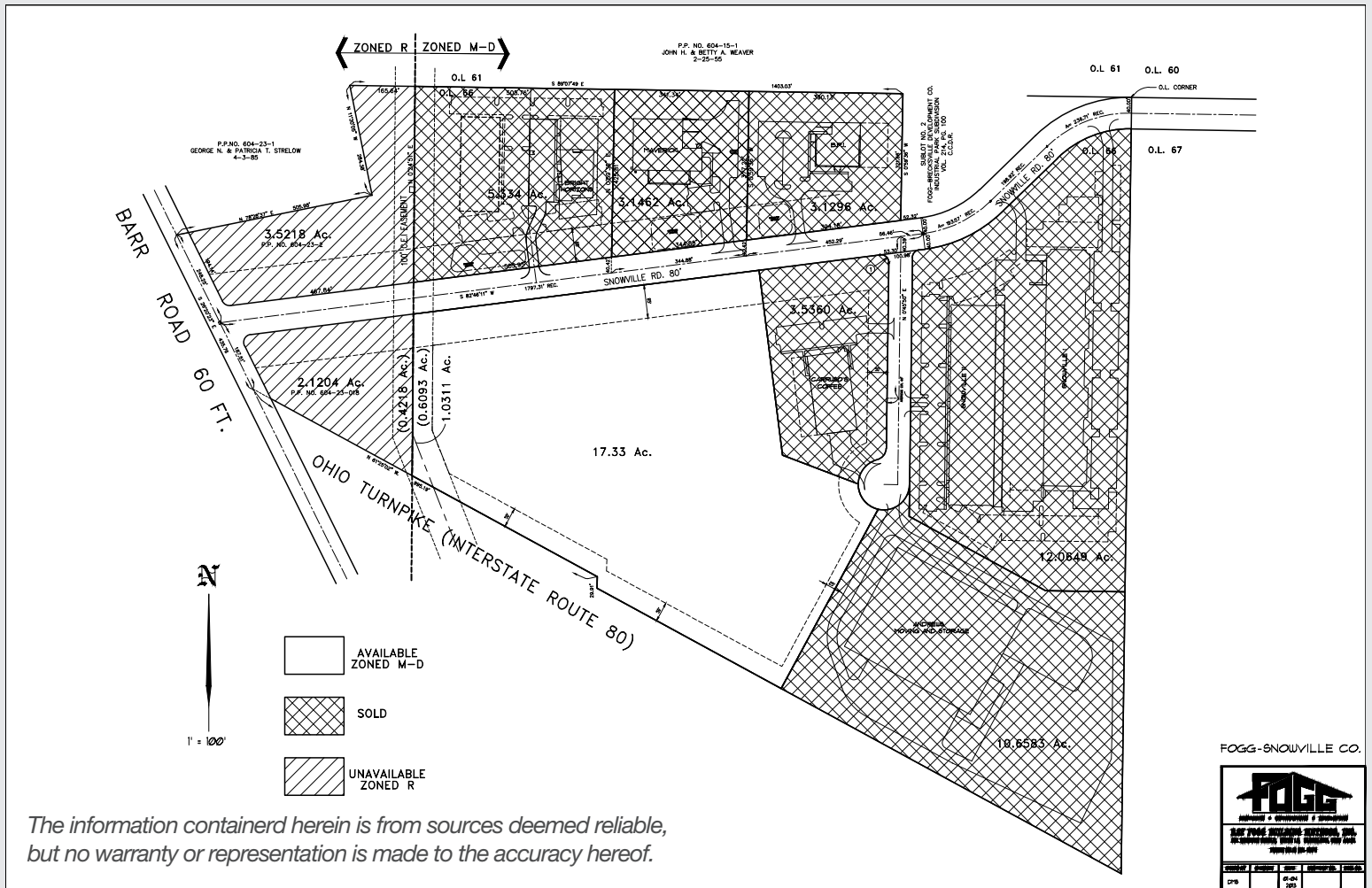
- Available: 17.33 acres
- Will build-to-suit

UTILITIES - All available at the street

- Electric: The Illuminating Co.
- Gas: Enbridge
- Water: City of Cleveland
- Sanitary & Storm Sewer: City of Cleveland

216.351.7976
fogg.com

"I couldn't be more pleased with working with everyone on the Fogg team. Moving an entire business is never easy, but Fogg made it easier with their professionalism, attention to detail and responsiveness from negotiating the lease, to the build out of the offices and shop, to supporting the move, then as needed property management since we've been in the facility. Fogg is a top-notch organization." – **PMI Industries**



The information contained herein is from sources deemed reliable, but no warranty or representation is made to the accuracy hereof.

